

*Leaky Select Simmental*  
**Online Production Sale**  
With Consignor Academy Hill Livestock

**DLMS Farmgate Auctions**  
**Bidding Opens Friday at 12:00 PM EST**  
**Closing Saturday at 6:00 PM EST**



**Viewing Friday, December 3 - 12:00 PM-5:00 PM**  
**Saturday, December 4 - 10:00 AM-6:00 PM**  
**At The Farm - Douro-Dummer, ON**

# Welcome



Welcome to the inaugural Leahy Select Simmental Production Sale! We are very pleased to offer to you a cross-section of what the Simmental breed has to offer. The Leahy family has raised cattle in the rolling landscape of Douro Township since arrival from Ireland in 1825. Shorthorn cattle have been the backbone of the operation for much of that time. AI was adopted in the early 1960s and Simmental sires were used from the early 1970s onwards adding impressive growth and performance to the commercial Shorthorn cow herd.

Our current purebred Simmental herd was started in 1999 by Bernard and Lise Leahy with early purchases of Fleckvieh cattle from James and Joan McKinley of Silver Springs. This herd has grown and evolved under

the name of Leahy Stock Farm, which also runs a herd of purebred Shorthorn cattle. Patrick and Deanna Leahy, as Leahy Livestock, began building up a Purebred and Fullblood Simmental herd in the mid 2010s.

Following the BSE crisis of 2003, the direct marketing of beef through local farmers markets and order sales was undertaken, and has continued to grow along with other livestock being raised for our meat program. Our herd has been influenced by our need for cattle that finish economically and with quality. A strong demand for beef has allowed us to cull extensively and profitably, which we believe pays dividends.

Both Leahy herds are run on hilly cattle country. Grazing is managed intensively, with daily movement of cattle. A select group of purebreds are calved in the winter, with the majority of cattle calving on grass in May and June. Calving ease, maternal ability, and udder quality are crucial traits to us. The main cowherd is wintered bale grazing on dry hay, with doability being quite important. We strive for longevity in our cowherd, frequently calving out the grass born heifers at three years of age. This allows them to grow out slower, and we feel the later production is offset by lesser feed costs, better milking, and easier rebreeding. It also allows us to offer extra age heifers bred for winter calving.

Our sale offering is reflective of our production methods. These are sound footed, good uddered cattle bred for maternal traits that are quiet and handled daily. There is plenty of rib shape to fill with hay on a cold January day. They also have the performance and muscle needed to sell bulls to commercial customers. Finally, these cattle are attractive in their lines, because if I'm going to see them every day, they best be worth looking at!

The Leahy female sale offering is composed of broody, grown out heifers, a powerful mature cow, and three exciting heifer calves. Four black bulls out of top-notch cows round out our offering. Our good friends, the Pearsons of Academy Hill Livestock join us with a top end black blaze two-year-old and her fancy heifer calf.

Looking to the future, we will add more to our Fullblood sale offering and integrate our Shorthorns as well.

We invite everyone to tour the sale offering and enjoy some hospitality at our farm on the afternoon of Friday December 3rd or Saturday December 4th. If you are unable to make it or have any questions, feel free to call Bernard, Patrick, or John Pearson. Ben Wright and the good folks at T Bar C know the sale offering well and would be glad to assist you. If you have any questions regarding the online bidding format, we are able to help you out.

Best Regards,

*Patrick Leahy*

# Bidding Opens

Friday December 3<sup>rd</sup> at 12:00 PM <sup>EST</sup> Closing Saturday December 4<sup>th</sup> at 6:00 PM <sup>EST</sup>  
Viewing Friday, December 3 - 12:00 PM - 5:00 PM &  
Saturday, December 4 - 10:00 AM-6:00 PM  
At The Farm - Douro, ON

## From The Desk at T Bar C

The Leahy family has deep roots not only in purebred cattle but also within the area they farm in. Patrick and his young family are the next generation that are keen and producing a product that is desirable with functionality and profit for the end consumer in mind. The cattle they are offering in this inaugural event are front the top of their respective breeding categories.

While touring these cattle mid September on grass you could tell their easy fleshing look with hair and balance. The lot 1 bred heifer has always been a standout, polled, dark red and exceptionally stout with a sound base makes her a great lead off female. The red calves are right off the top cut and have pedigree with style and shape. The bull calves are intriguing especially at this time of year lead off by an exciting Bankroll son that checks off all the boxes. Please talk with Patrick or myself on a wintering solution if purchasing one of these herdsires.

To conclude we invite everyone to check out the offering and get to know Patrick. His eye for cattle is sharp and very upbeat to be around. Their cattle are managed in ideal form with a forage base and are very docile. Any questions regarding the offering please don't hesitate to contact any of us listed.

For the Entire Leahy family

*Ben Wright*



**Chris Poley**  
306-220-5006



**Shane Michelson**  
403-363-9973



**Ben Wright**  
519-374-3335



**T Bar C Cattle Co. Ltd.**  
306-933-4200  
Box 2330, Warman, SK S0K 4S0  
info@tbarc.com  
www.buyagro.com

## Sale Day Contacts

Patrick Leahy	705-927-3126
Bernard Leahy	705-927-2946
John Pearson	905-376-3775
Mark Shologan (DLMS)	780-699-5082



## How To Bid

1. Visit <https://farmgatetimedauctions.ca> , click the LOGIN/REGISTRATION button. First time users will select the REGISTER button from this page. Fill out the registration form to signup for a free user account. It allows you to select a username and password for use on all Farm Gate Timed auctions. This program will send you text and email messages whenever there is activity on your favorite lots, or someone challenges your proxy bid. This is why you will be asked for both your current email and cell phone number.

If you are a past participant in the Farm Gate Timed auctions, simply enter your username and password to continue. This takes you to a list of both current and upcoming Farm Gate Auctions. Select the LEAHY SELECT SIMMENTAL ONLINE PRODUCTION SALE.

2. You can choose your favourite lots in the sale at this time. The program will allow you to open either all sale lots, or just your favorite lots on your screen. Any time there is active bidding on a lot you have identified on your favorite list, you will get a text and/or an email noting this activity.

3. The program allows you to place a proxy bid on any sale lot. This protects your interest in any lot of interest for you to a specified dollar value you set, when you may not be able to give 100% attention to the sale. If the lot has a \$2000 bid on it and you place a proxy bid of \$3500 into the system, the computer will bid \$2100 for you. But if some one else bids \$2200, the computer will again bid for you, this time at \$2300. The system will look after your interest to a maximum of \$3500. If another bidder is on at \$3600, your proxy will no longer be effective and you will no longer have the winning bid on this lot without once again logging in and bidding again, or moving your attention to a second lot of interest.

4. At closing time of the sale, the entire sale will extend bidding for 5 minutes if a bid is placed on any lot in the sale. Any bid received after 6 PM will extend the sale by 5 minutes, from the time of that bid. When no bidding occurs for 5 minutes, the computer will declare the sale finished.

5. Within 24 hours of the sale close, the sale consignor will contact all winning bidders to arrange payment, transfer of pedigrees and delivery/pick up of your lot.

**If you require assistance with using the new DLMS Farm Gate web site, if you don't understand how to create a favorites list or proxy bid, or you just plain want to bid via phone, please talk to any of the DLMS team.**

Consigned by Leahy Stock Farm



LOT 1

# Leahy's Grace 13G

P1297872 LHY 13G June 2, 2019 Polled Fullblood Female

CROSSROAD RADIUM 789U  
LEAHY'S DANNO 3D  
LEAHY'S MAJORIE 3Y

DFM MARCUS 14M  
NOSSATERRA POL HONEYMOON  
DELTA-RHD MISS HOLLYWOOD FF31R

MF MR. EVAN 14P  
CROSSROAD PANDITA 308P  
GIBBY'S TNT  
ROLLING ACRES TRANQUIL  
GRINALTA'S GRIDIRON 403J  
DFM KATHLEEN 41K  
CF-DDD HOLLYWOOD M200  
GIBBONS SAVANNAH

CE	BW	WW	YW	Milk	MWWT
4.5	5.7	77.7	101.9	38.9	77.8

It is with pride we offer this quality female in this our inaugural sale. Grace has the physical conformation and the maternal genetics to be a foundation brood female. A deep, well sprung rib cage, sound feet and legs and clean feminine front end describe her skeletal make up. Ad to this plenty of natural thickness, an easy doing metabolism and gentle temperament. Her extra age helps her ease into productivity. She is fancy with her dark cherry red attached goggles, and yet will be practical if her dam's production is any indication. We purchased her dam, Honeymoon, from the Muellers at the Gagnon sale in 2009 and she has been the backbone of our polled Flechvieh program. Producing an outstanding daughter for Dennis Carew's herd, 2 herd bulls and 3 retained sisters, Grace's dam has demonstrated the influence one superior female can have. Her sire Danno, a polled Radium son, has provided a group of polled females, which calved easily and will be the base for our Flechvieh enterprise for years to come. He went on to work in Chad Lean's commercial herd. The breeding to the renowned Sibelle Spartacus 8A enhances the offering.

**Bred to Sibelle Spartacus 8A on March 26, 2021. Preg checked favourable to that date.**



Radium- Paternal Grandsire



Spartacus 8A- Service Sire



Danica 13D- maternal sister

Consigned by *Leahy Livestock*



**LOT 2**

## PLL Georgia Joy 7G

BPG1363881 PLL 7G June 9, 2019 Polled Purebred Female

CROSSROAD RADIUM 789U  
LEAHY'S DANNO 3D  
LEAHY'S MAJORIE 3Y

CNS PAYS TO DREAM T759  
JF EBONYS JOY 2335Z  
JF EBONYS JOY 734T

MF MR. EVAN 14P  
CROSSROAD PANDITA 308P  
GIBBY'S TNT  
ROLLING ACRES TRANQUIL  
CNS DREAM ON L186  
MLF BL JESSIE K336  
3C MACHO M450 BZ0  
SOSF EBONYS JOY L-123

CE	BW	WW	YW	Milk	MWWT
9.9	3.2	72.4	99.6	29.2	65.4

Here is a great example of the potential available to Simmental breeders in mixing Purebred and Fullblood genetics. 7G is a paternal sister to our powerful Lot 1 female, and out of a very unique pedigreed cow selected and imported by Dan Munroe from Jansen Farms in Iowa. PLL 7G's dam was one of only four Pays to Dream daughters brought to Canada, and a granddaughter of the immortal 3C Macho bull. Maternal sisters to 7G have been well received and have sold to Paul Marshall and the Briand family. A black paternal sister was purchased and shown successfully by Madison Webster who has been tearing up the show road with a daughter this year. The combination of Fleckvieh power, sogginess, and milk with Purebred style, femininity, and udder quality are evident in PLL 7G. This extra age heifer is grown out, mature, and ready to be a brood cow. She is wide pinned, wide topped, clean shouldered, sound footed, and big ribbed. Expect a stylish, long bodied, and potentially blaze faced calf from her mating to PLL

Fernando 4F along the lines of our Lot 3 "Leahy's Jellybean" calf.

Observed bred May 16, 2021 to PLL Fernando 4F. Preg checked favourable to observed date.



PLL 4F- Service Sire



Pays to Dream- Maternal Grandsire



LOT 3

### Leahy's Jellybean 2J

BPG1369148 LHY 2J March 27, 2021 Polled Purebred Female

CCR COWBOY CUT 5048Z  
PLL FERNANDO 4F \ HP-HOP  
MGL SHEILA 711A

SULLYS CALIBER  
LEAHY'S GINA 1G  
LEAHY'S CASANDRA 10C

TRIPLE C SINGLETARY SSH  
CCR MS 4045 TIME 7322T  
ELLINGSON IDEAL X13  
M & L SHEILA 71S  
SULLYS YEOMAN 9Y  
SULLYS ZIGGY  
NICHOLS MANIFEST T79  
LEAHY'S BLACK CHERRY 11Y

ACT BW	ACT WW	CE	BW	WW	YW	Milk	MWWT
84 lbs	785 lbs	10.6	1.8	76.4	109.2	24.7	62.9

Here is a special late March heifer calf that is halter broke and a joy for children to work with. Jellybean has the conformation and temperament to be a successful junior project and has the goods to be a practical brood cow. Her picture emphasizes her length, femininity and deep rib but you need to see her in 3D! A broad top, expressive stifle and full, deep rear quarter attest to her natural thickness. In motion, she is free moving in her pasterns and hocks with a long stride.

Jellybean was born unassisted at 84 lbs. from a 2 year old heifer. Her sire Fernando 4F has impressed us with his consistent calving ease and eye catching, thick made progeny. Her dam has a tight udder and exhibits the same length and soundness of movement. Her maternal grandsire, Sully's Caliber was Senior Champion bull at the 2017 RAWF.

We are very impressed with this calf. Her dam is bred the same way again, so we feel we can part with her.



PLL 4F- Sire

Consigned by *Leahy Livestock*



LOT 4

PLL *Jackie* 3J

PG1364903 PLL 3J January 3, 2021 Polled Purebred Female

WS PILGRIM H182U  
RUST HENN RAMBLER 6003  
KAPPES SADIE M166

REMINGTON RED LABEL HR  
M&L 71Y  
SILVERSPRINGS JUANITA

CNS DREAM ON L186  
WS MARLA 276M  
PVF PREFERRED EDGE 7176  
KAPPES STOP LIGHT J35  
CNS DREAM ON L186  
HS REFLECTIONS J34  
ER BIG SKY 545B  
SILVERSPRINGS GAYLE 706

ACT BW	ACT WW	CE	BW	WW	YW	Milk	MWWT
72 lbs	713 lbs	8.8	2.5	67.5	87.4	26.6	60.4

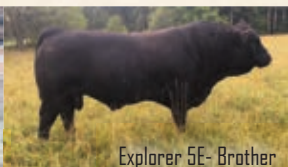
PLL Jackie 3J is the ideal kind of female we strive to produce, and the type that works really well in our program. She is stout made, big middled, clean fronted, structurally sound and striking on the profile. This is an easy keeping, early maturing female that should breed easily and early. She types in really nicely with her Rambler sister "PLL Kendra 4J" and has a full brother working for Joe Deshane of Havelock.

Most importantly, Jackie is backed by one of our top producing cows, RMHL 71Y. We were fortunate to acquire three top notch cows from Roger Maloney and they have been the kind to build a herd around. This cow calves, milks, breeds back and consistently raises the fattest, sleekest calves. Her 2017 son, PLL Explorer 5E was shown successfully and has made a great impact in our herd, with his first daughters calving easily with top quality udders and powerful sons attracting the attention of both commercial and purebred cattlemen. He is now working for Slipp Farms of New Brunswick.

If you are looking for a complete, well balanced red female then PLL Jackie 3J is the matriarch in the making you want in your heifer pen.



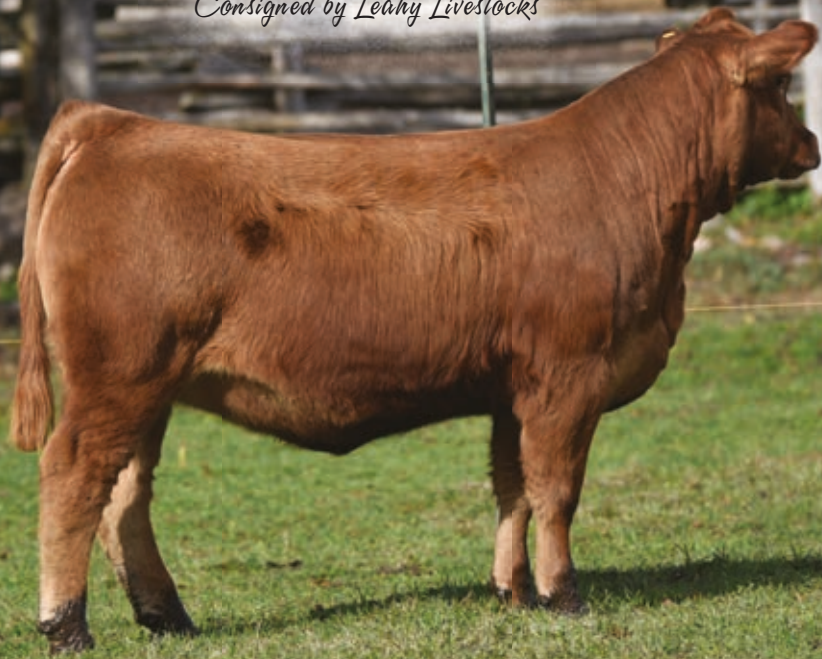
Rambler 6003- Sire



Explorer 5E- Brother



Consigned by Leahy Livestocks



LOT 5

## PLL Kendra 4J

PG1368030 PLL 4J January 4, 2021 Polled Purebred Female

WS PILGRIM H182U  
RUST HENN RAMBLER 6003  
KAPPES SADIE M166

LRX THE GODFATHER 141Z  
M&L KENDRA 57B  
M & L KENDRA 57K

CNS DREAM ON L186  
WS MARLA 276M  
PVF PREFERRED EDGE 717G  
KAPPES STOP LIGHT J35  
HARVIE JDF WALLBANGERNIX  
LRX MS ACE 10X  
ER BIG SKY 545B  
SILVER SPRINGS HILDA 57HS

ACT BW	ACT WW	CE	BW	WW	YW	Milk	MWWT
92 lbs	790 lbs	8.6	2.0	76.5	106.6	25.8	64.1

### Selling half-interest

Heads up here folks! PLL Kendra 4J stems from one of our most potent breeding pieces, M&L Kendra 57B who consistently produces top quality calves with great style and performance. By combining the highly regarded black Pilgrim bull and Kappes Sadie cow with Kendra 57B's proven performance record we think we have a high potential black red package with a unique genetic twist.

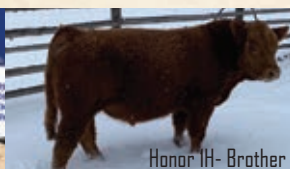
Her sister was Senior Calf Champion at the 2019 National Simmental Show, and a crowd favourite at the Royal Elite Sale, selling to the Cameron Family and Jason Hurst. This calf should be quite competitive as a bred, and is in ideal condition to launch next year's campaign.

Last year's full brother is a true powerhouse, posting an impressive October weaning weight of 1040lbs in a smooth-fronted boxcar-bodied package. He has been retained for in herd use, watch for his progeny next year.

Kendra 4J is tremendously long fronted, barrel middled, wide based, and super smooth on the move. We are looking forward to partnering with someone on a female we think has truly unique breeding potential.



Kendra's Gem 3G- Sister



Honor 1H- Brother



-Kendra 57B- Dam

Consigned by *Leahy Livestock*



LOT 6

## PLL *Harriet* 6H

PG1363879 PLL 6H April 23, 2020 Polled Purebred Female

WS PILGRIM H182U  
RUST HENN RAMBLER 6003  
KAPPES SADIE M166

SULLY'S CALIBER  
LHY FINESSE 5F  
LEAHY'S BLACK CHERRY 11Y

CNS DREAM ON L186  
WS MARLA 276M  
PVF PREFERRED EDGE 717G  
KAPPES STOP LIGHT J35  
SULLY'S YEOMAN 9Y  
SULLY'S ZIGGY  
RC CLUB KING 040R  
SILVERSPRINGS JUDY 72J

CE	BW	WW	YW	Milk	MWWT
10.2	1.6	71.4	97.7	23.6	59.3

This is an attractive lined red April heifer out of an easy calving, great uddered two year old heifer. Much like the other Rambler progeny in the sale, Harriet combines stylish structure with muscling and free movement. She is bred for an April calf to PLL Uprising 5H for calving ease. He is a son of the STF Uprising bull doing great things for the folks at IRCC and out of a sharp lined, perfect uddered WHF Limitless heifer sourced from them. The resulting calf should carry an interesting pedigree and have loads of potential!

Observed bred to PLL Uprising 5H July 18, 2021. Preg checked favourable to breeding date.



Rambler 6003- Sire

Consigned by *Leahy Livestock*



lot 7

MRL *Miss* 5400C

BPG1139103 MRL 400C January 23, 2015 Polled Purebred Female

SVS OPEN RANGE 28Y  
SVS MILWAUKEE 53A  
DESTINY DREAM EILEEN

MRL TURBO 96S  
MRL MISS 513X  
MRL MISS 484U

RF DOUBLE UP 37W  
MISS TEE 133N  
GCF FIRST DREAM P13  
DESTINY MAGNUM TWAIN  
MRL RED RYDER 73P  
MRL MISS 476N  
TH BLACK EDITION 8R  
MRL MISS 843S

CE	BW	WW	YW	Milk	MWWT
6.6	3.8	73.7	108.0	24.1	61.0

Powerful, huge barreled, brood cow on offer here! MRL 400C was selected in 2016 from McMillen Ranching in Saskatchewan and has produced well for us. We have retained two daughters, one of which may be a sale feature as an extra age bred heifer next year. This SVS Milwaukee daughter is big footed, easy calving, good uddered, and very gentle to work with. She was calving in our spring group, and I moved her back to increase our January calving numbers. We wanted to offer another PLL 4F pregnancy so decided to make her available. Look for the resulting calf here to be long spined, explosive through the middle third, with lots of muscle and great bone. A two year old daughter of MRL 400C is doing a great job on her blaze faced fall born PLL 4F son, watch for him next year. This is a cow I will miss, but look forward to seeing how she will produce in future.

**Observed bred to PLL 4F March 28, 2021. Preg checked favourable to observed date.**



PLL 4F- Service Sire

Consigned by Leahy Stock Farm



Lot 8

# Leahy's Geraldine 25G

BPG1297877 LHY 25G July 14, 2019 Polled Purebred Female

CCR COWBOY CUT 5048Z  
PLL EXPLORER 5E \ HP-HEP  
MGL 71Y

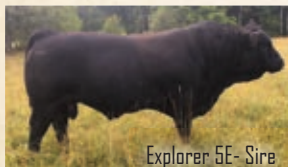
GIBBY'S TNT  
LEAHY'S MAJORIE 3Y  
ROLLING ACRES TRANQUIL

TRIPLE C SINGLETARY S3H  
CCR MS 4045 TIME 7322T  
REMINGTON RED LABEL HR  
SILVERSPRINGS JUANITA  
DOUBLE BARD MAKE M PILED  
GIBBY'S HERZ-EMP IST 208M  
BAR 5 SA STRIDE 413P  
DREAMLAND IRON MIST FF 6P

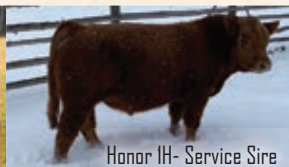
CE	BW	WW	YW	Milk	MWWT
6.9	3.6	72.8	100.0	31.8	68.2

Here is an extra age heifer with plenty of middle. Sired by the PLL Explorer bull and out of a good Fleckvieh mother. Geraldine should be functional, fertile, and trouble free in terms of calving ease, udder, and maternal ability. We calved our first Explorer heifers this year and they have picture perfect udders, are easy calvers, and great mothers. Her maternal grandmother, Rolling Acres Tranquil, has possibly raised her best calf yet at age 14, so look for longevity here too. She is bred to PLL Honour 1H, a full brother to the Lot 1 heifer, Kendra 1J. Look to him to add muscle, performance, and length of body while still carrying a tremendous maternal punch.

Exposed to PLL Honour 1H June 2 to September 1, 2021. Preg checked favourable to early June breeding for mid March calf.



Explorer 5E- Sire



Honour 1H- Service Sire

Consigned by *Leahy Livestock*



LOT 9

## PLL Jack Flash 5J

BPG1368462 PLL 5J January 20, 2021 Polled Purebred Male

W/C LOADED UP 1119Y  
W/C BANKROLL 811D  
MISS WERNING KP 8543U

WFL ABSOLUTE 51Y  
MISS 55 C  
MAPLE KEY TUNE

REMINGTON LOCK N LOAD 54U  
AUBREYS BLACK BLAZE III  
WAGR DREAM CATCHER D3R  
MISS WERNING 534R  
LFE STRAIT UP 454W  
WFL MS BLACK FLASH 8068U  
HRC RED INFERNO BR  
MAPLE KEY NEPTUNE

ACT BW	ACT WW	CE	BW	WW	YW	Milk	MWWT
77 lbs	775 lbs	10.8	3.1	78.1	114.8	23.6	62.7

PLL Jack Flash 3J has been the girls' favourite here since day one and has been a real eye catcher for visitors too. With his attractive blaze face, massive spring of rib, stylish structure, and great testicle development we think he checks the boxes for a great breeding bull. The combination of the great W/C Bankroll with the cow making prowess of WFL Absolute offers Jack Flash some very unique potential. Visitors often remark on his striking Maccrostie bred dam, noting her great size and soundness of foot, quality of udder, and overall appeal. She has sons working in commercial herds, a productive daughter with the Crawfords at RPCC, and a powerful heifer we will calve this winter. With a near ideal EPD profile, attractive phenotype, and powerful genetic punch, this is a bull we think very highly of and look forward to seeing the impact he will make in a herd.



Bankroll 811D - Sire



Miss 55C - Dam

Consigned by *Leahy Livestock*



LOT 10

PLL *Johnny Reb* 7J

8PG1366403 PLL 7J March 4, 2021 Polled Purebred Male

W/C BULLSEYE 3046A  
HPF BULLSEYE 230D  
IC CREAM SODA R5G

W/C WIDE TRACK 694Y  
ACADEMY HILL CHAPSTICK 7C  
ACADEMY HILL ZIPPER 2Z \ HP-HOP CC-HOB

REMINGTON LOCK N LOAD 54U  
MISS WERNING KP 8543U  
CNS DREAM ON L18G  
SS JEZABELLE N120  
3C W/C RIGHT TRACK W946Z  
MISS WERNING 694S  
MR NLC UPGRADE U8676  
ACADEMY HILL WEDNESDAY 6W

ACT BW	ACT WW	CE	BW	WW	YW	Milk	MWWT
83 lbs	768 lbs	10.2	2.5	75.7	112.1	19.4	57.3

PLL 7J is the youngest bull on offer but certainly makes up for it in growth and performance. Born March 4th, he posted an impressive weaning weight of 768lbs on October 6th. This bull is wide based, soggy made, and really moves well. He carries a few flashes of white on the face and can sire those coveted blaze faced cattle.

PLL 7J is backed by a great uddered Wide Track dam from Academy Hill who impressed us by rebreeding for January 13 and is sired by HPF Bullseye who has produced high selling and show winning progeny for the Mastine family. Like the PLL 5J bull, PLL 7J traces back to the great Werning KP 8543U cow, one of the most dominant matriarchs of the breed. This bull combines style, performance, and pedigree and should really work well in a variety of settings.



Bullseye 230D- Sire



Wide Track 694Y- Maternal Grand sire

Consigned by *Leahy Livestock*



LOT 11

PLL *Jester* 1J

BPG1364902 PLL 1J January 1, 2021 Polled Purebred Male

CCR COWBOY CUT 5048Z  
PLL EXPLORER 5E \ HP-HEP  
MGL 71Y

SPRINGCREEK LOTTO 52Y  
NORTH STAR MADISON 4B  
JF MADISON 903W

TRIPLE C SINGLETARY S3H  
CCR MS 4045 TIME 7322T  
REMINGTON RED LABEL HR  
SILVERSPPRINGS JUANITA  
KOP CROSBY 137W  
SPRINGCREEK BLK TESS 25T  
TNT TOP GUN R244  
MS MAXIE LOU M12S

ACT BW	ACT WW	CE	BW	WW	YW	Milk	MWWT
83 lbs	870 lbs	9.2	2.8	72.4	100.9	26.7	62.9

This is a very well-balanced bull who puts together all of the traits we think you need to be profitable. He is super long bodied, wide topped, clean jointed, and smooth enough through the shoulders for good calving ease and is very quiet and easy to work around. PLL 1J was the weaning weight leader of this bull pen, and is really developing well. We sold an identical full brother to Kevin McNaughton of Barrie last year, and he has other brothers working in commercial herds as well. We can't say enough good things about his mother whose pedigree combines many of the breed's greats such as Lotto and Top Gun. She consistently produces long bodied cattle with function and style, has great fertility, and a picture-perfect udder. PLL 1J has a really nicely balanced EPD spread, and whether you are looking to raise long bodied commercial calves that weigh up well or to breed replacement females that will work hard and be problem free we think this bull is a sure bet.



Explorer 5E - Sire



Lotto 52Y - Maternal Grandsire

Consigned by *Leahy Livestock*



**LOT 12**

**PLL Jagger 2J**

BPG1364900 PLL 2J January 2, 2021 Polled Purebred Male

CCR COWBOY CUT 5048Z  
PLL EXPLORER 5E \ HP-HEP  
MGL 71Y

LFE COMMISSIONER 811Z  
LFE BS JOELINE 4C  
LFE BS JOELINE 620U

TRIPLE C SINGLETARY S3H  
CCR MS 4045 TIME 7322T  
REMINGTON RED LABEL HR  
SILVERSPRINGS JUANITA  
3D BLK FULL THROTTLE 483X  
LFE BS LASS 189X  
LFE MR LEWIS 462P  
LFE BS JOELINE 16R

ACT BW	ACT WW	CE	BW	WW	YW	Milk	MWWT
85 lbs	765 lbs	8.6	3.3	74.6	109.8	25.1	62.4

PLL 2J is wide topped, clean shouldered, and free moving. He is a good example of the Explorer calves- moderate, soggy, correct, and easy keeping. Bob Clifford bought a May born Explorer son for his commercial herd this spring and reported "The bull has been great. Put him out July 15 and he hasn't looked back."

PLL 2J's LFE Commissioner dam was selected from Lewis Farms in Alberta in 2016 and has impressed us with her tidy udder, great spring of rib, foot quality, and maternal ability. A maternal sister to PLL 2J sold to Percyview Simmentals in the Royal Elite Sale in 2017. Look to this bull for trouble free calving, growth, and soundness.



Jolene 4C - Dam



Commissioner 811Z - Maternal Grandsire



Consigned by Academy Hill Livestock



LOT 13

## Academy Hill *Gidget* 3G

BPG1278112 AHL 3G January 2, 2019 Polled Purebred Female

REMINGTON LOCK N LOAD 54U  
W/C LOCK N LOAD 1143Y  
AUBREYS BLACK BLAZE III  
MR NLC UPGRADE U8676  
ACADEMY HILL APRICOT BA  
ACADEMY HILL XRAY 4X

REMINGTON ON TARGET 2S  
BAR 15 MISS KNIGHT78E-SIG  
3C MACHO M450 BZ  
BLAZE IV IP  
ELLINGSON LEGACY M229  
MS NLC MOJO S6119 B  
ACADEMYHILL UNDERCOVER 4U  
ACADEMY HILL RAVEN 5R

CE	BW	WW	YW	Milk	MWWT
13.7	1.2	69.8	101.5	18.5	53.4

This Cow/Calf pair represents what we are striving to achieve- sound structured, clean fronted, good uddered females with eye appeal. As a calf, Gidget was Supreme Champion Female at the Quinte Exhibition and also won her class at the Royal. Her mother was Reserve Senior Heifer Calf Champion at the Royal. Bred early to Semex's exciting new Black Baldy Bull "True North".

**AI bred April 9, 2021- LLW CARD True North G71. Ultrasound favourable to a heifer calf.**

*We would like to congratulate the Leahy Family on this inaugural event and thank them for inviting us to participate.*



LLW Card True North G71

Consigned by Academy Hill Livestock



LOT 14

## Academy Hill *Juno Mask* 4J

BPG1358877 AHL 4J January 8, 2021 Polled Purebred Female

CNS DREAM ON L186  
WLE UNO MAS X549  
SHAWNEE MISS 770P

W/C LOCK N LOAD 1143Y  
ACADEMY HILL GIDGET 3G  
ACADEMY HILL APRICOT 8A

NICHOLS LEGACY G151  
CNS SHEEZA DREAM K107W  
SS GOLD MINE L42  
NLC L677D  
REMINGTON LOCK N LOAD 54U  
AUBREYS BLACK BLAZE III  
MR NLC UPGRADE U8676  
ACADEMY HILL XRAY 4X

ACT BW	CE	BW	WW	YW	Milk	MWWT
69 lbs	16.9	-1.4	64.1	87.7	17.1	49.2

Juno Mask was named as a play on words between the year letter J, her sire Uno Mas and the mask that she appears to be wearing. She's made right for the times- including the mask. Sells up to date on vaccinations.

# Terms & Conditions...

**TERMS:** The terms of the sale are cash or cheque, payable at par at the sale location. The right of property shall not pass until after settlement has been made; no invoicing on buyers in attendance unless previous arrangements have been made. Every animal sells to the highest bidder and in cases of disputes, the auctioneer's decision will be final. Announcements from the auction block will take precedence over the printed matter in the catalogue. Current exchange rates will be announced sale day. All monies are in Canadian funds.

**CERTIFICATE OF REGISTRATIONS:** A certificate of registry duly transferred will be furnished to the buyer for each animal after payment has been made.

**HEALTH:** All animals in the sale have met all necessary health requirements.

**PREGNANCY INFORMATION:** All serviceable age females have been pregnancy examined by an accredited veterinarian, giving an estimated length of gestation. This estimated gestation period shall be used only as a guideline to calving and is not a guarantee of actual service.

**LIABILITIES:** All persons attend the sale at their own risk. The seller, facility owner and sale manager assume no liability legal or otherwise, for any accidents that occur. It is understood that T Bar C Cattle Co. (2013) Ltd. is acting only as a medium between buyer and seller and is not responsible for any failure on the part of either party to live up to his obligations. Neither does T Bar C Cattle Co. (2013) Ltd. assume any financial obligations to collect or enforce collection of any monies between parties and any legal action that may in exceptional cases be taken must be between the buyer and the seller. T Bar C Cattle Co. (2013) Ltd. assumes no responsibility for any credit extended by the seller to the buyer. The buyer must look to the seller for fulfillment of all guarantees and representations made hereunder.

**DELIVERY:** Assistance will be given in getting your purchases home. Each animal becomes the risk of the purchaser as soon as sold.

**PHONE, MAIL, WIRE BIDS:** Bidders unable to attend the sale may phone, wire or mail their bids and instructions to the sale manager, auctioneer or special representatives. Bids must be received in sufficient time prior to the sale.

**INSURANCE:** We strongly recommend that insurance is purchased for full value.

**ERRORS:** All announcements at sale time, written or oral, supersede any written material in the catalogue.

## *Leahy Livestock*

Patrick and Deanna Leahy and Family  
496 County Road 8  
Douro-Dummer, ON, K0L 2B0  
705-927-3126  
pat.leahy17@gmail.com

## *Academy Hill Livestock*

John and Kathy Pearson  
Box 157, Grafton, ON  
K0K 2G0  
905-376-3775  
j.pearson@sympatico.ca

## *Leahy Stock Farm*

Bernard and Lise Leahy  
3113 Hwy 28, Douro-Dummer, ON K0L 2H0  
705-927-2946  
bern.leahy@gmail.com

**Return Undeliverable  
Canadian Addresses To:**

**T Bar C Cattle Co. Ltd.  
Box 2330  
Warman, SK S0K 4S0**



Created by

*Today's  
Publishing*